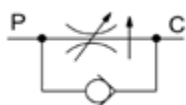




BLOQUES EN LÍNEA / MANIFOLDS IN-LINE / BLOCS EN LIGNE

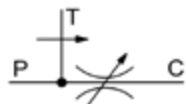
**REGULADORES DE CAUDAL (EN LÍNEA)**  
**REGULATOR FLOW (IN-LINE)**  
**RÉGULATEURS DE DÉBIT (EN LIGNE)**



**REGULADORES DE CAUDAL 2 VÍAS COMPENSADO CUERPO ALUMINIO**  
**2-WAY COMPENSATED FLOW CONTROL VALVES ALUMINIUM BODY**  
**RÉGULATEURS DE DÉBIT 2 VOIES COMPENSE CORPS ALUMINIUM**



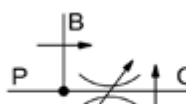
Ref.	Type	Q (l/min.)		
HOR100022	RFA2VU38A	45	3/8	270
HOR100023	RFA2VU12A	60	1/2	270
HOR100024	RFA2VU34A	90	3/4	270
HOR100025	RFA2VU10A	190	1"	270



**REGULADORES DE CAUDAL 3 VÍAS COMPENSADO CUERPO ALUMINIO**  
**3-WAY COMPENSATED FLOW CONTROL VALVES ALUMINIUM BODY**  
**RÉGULATEURS DE DÉBIT 3 VOIES COMPENSE CORPS ALUMINIUM**



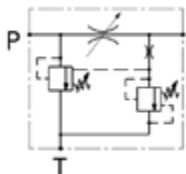
Ref.	Type	Q (l/min.)		
HOR100006	RFA38A	60/35	3/8	270
HOR100007	RFA12A	100/65	1/2	270
HOR100008	RFA34A	150/90	3/4	270
HOR100009	RFA10A	280/190	1"	270



**REGULADORES DE CAUDAL 3 VÍAS COMPENSADO PRIORITARIO CUERPO ALUMINIO**  
**3-WAY COMPENSATED PRIORITARY FLOW CONTROL VALVES ALUMINIUM BODY**  
**RÉGULATEURS DE DÉBIT 3 VOIES COMPENSE PRIORITAIRE CORPS ALUMINIUM**



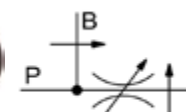
Ref.	Type	Q (l/min.)		
HOR100010	RFPA38A	60/35	3/8	270
HOR100011	RFPA12A	100/65	1/2	270
HOR100012	RFPA34A	150/90	3/4	270
HOR100013	RFPA10A	380/190	1	270

**REGULADORES DE CAUDAL 3 VÍAS COMPENSADO CUERPO ALUMINIO + LIMITADORA**  
**3-WAY COMPENSATED FLOW CONTROL VALVES ALUMINIUM BODY + RELIEF**  
**RÉGULATEURS DE DÉBIT 3 VOIES COMPENSE CORPS ALUMINIUM + LIMITEUR**



Ref.	Type	Q (l/min.)		
HOR110010	RFVLP1038A	60/35	3/8	270
HOR110011	RFVLP1012A	100/65	1/2	270
HOR110012	RFVLP1034A	150/90	3/4	270
HOR110013	RFVLP1010A	280/190	1"	270

**REGULADORES DE CAUDAL 3 VIAS COMPENSADO PRIORITARIO CUERPO FUNDICION**  
**3-WAY PRIORITARY COMPENSATED FLOW CONTROL VALVES CAST IRON BODY**  
**RÉGULATEURS DE DÉBIT 3 VOIES COMPENSE PRIORITAIRE CORPS FONTE**



Ref.	Type	Q (l/min.)		
HOR10001302	RF-G	90/50	3/4-1/2-1/2	350